



majestic series

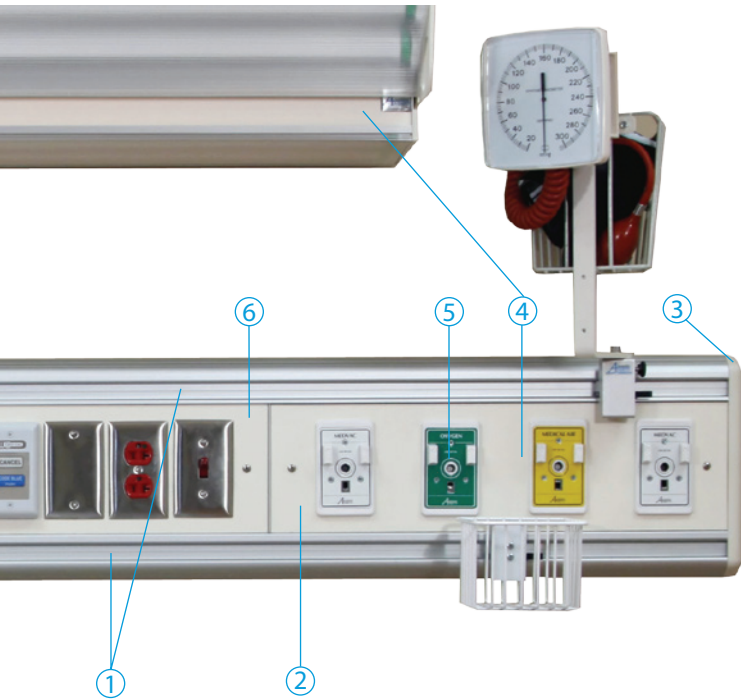
recessed single tier horizontal headwalls

product benefits

- customizable to meet your facility's specific needs
- expandable to meet your future requirements
- dual accessory rails for equipment management
- smooth rounded edges for infection control and durability
- laminate colors to meet your room décor
- services manifolded to a single point for ease of installation
- reduced patient overhang

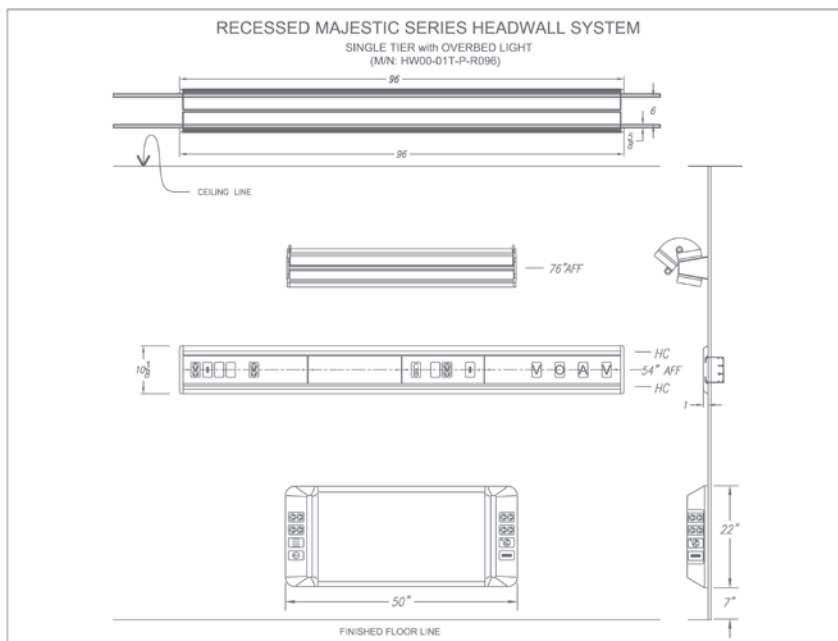
applications

ICU
NICU
Emergency Department
LDR Post-Partum
PACU
Transitional Step-Down
Patient Rooms
Radiology
Special Procedure



- ① two full length scratch resistant accessory rails
- ② removable laminate panels for access to electrical services
- ③ high impact resistant end caps made from injection molded fire retardant ABS plastic
- ④ custom colors of hospital grade laminate available to meet the room décor
- ⑤ accommodates almost any configuration of medical gas outlets, electrical and communication services
- ⑥ factory pre-wired and piped to a single-point connection for ease of installation

typical drawing



Please visit www.amico.com for all technical specifications, installation instructions, detailed AutoCAD drawings and more.

represented by:



majestic series

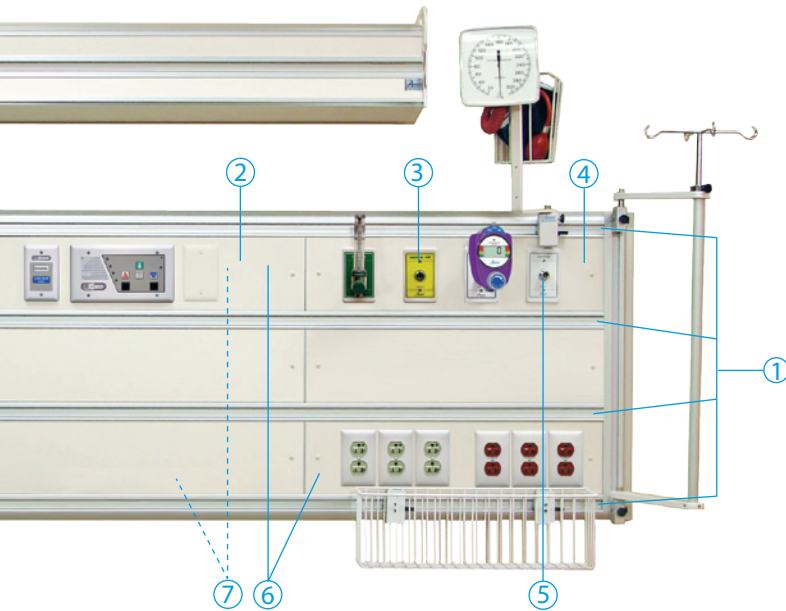
recessed double tier horizontal headwalls

product benefits

- customizable to meet your facility's specific needs
- expandable to meet your future requirements
- four accessory rails for increased equipment management
- smooth rounded edges for infection control and durability
- powder coated access panels and laminate colors to meet your room décor
- services manifolded to a single point for ease of installation
- reduced patient overhang
- vertical rail for IV, infusion pump, monitor and IT management

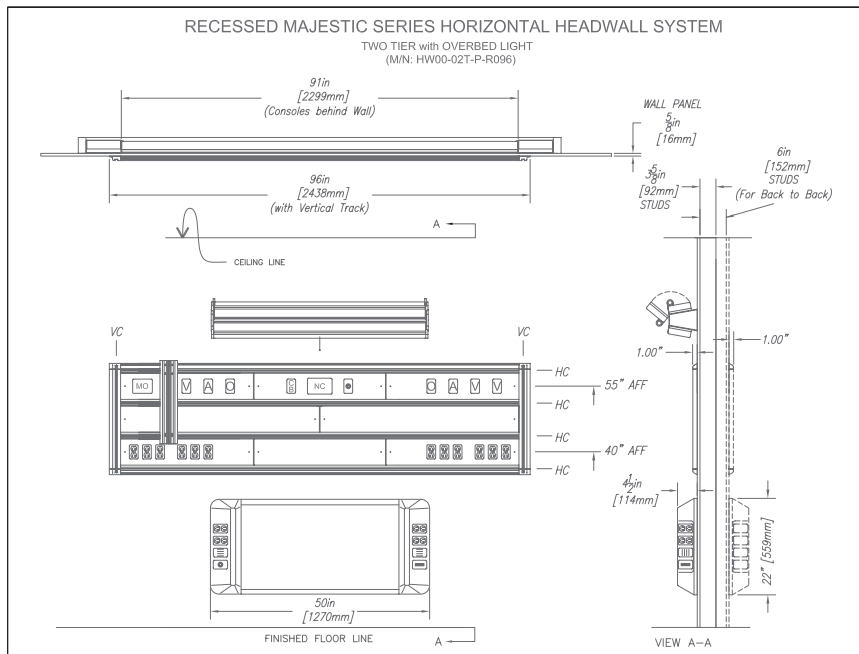
applications

ICU
NICU
Emergency Department
LDR Post-Partum
PACU
Transitional Step-Down
Patient Rooms
Radiology
Special Procedure



- ① four full length scratch resistant accessory rails
- ② removable laminate panels for access to electrical and medical gas services
- ③ surface mounted outlets allow ease of access for annual maintenance
- ④ custom colors of hospital grade laminate available to meet the room décor
- ⑤ accommodates almost any configuration of medical gas outlets and electrical receptacles
- ⑥ two tiers for housing medical gas, electrical and communication services
- ⑦ internal raceways for high and low voltage device wiring

typical drawing



Please visit www.amico.com for all technical specifications, installation instructions, detailed AutoCAD drawings and more.

represented by: