

## Monitor Roll Stand



Part Number: RS1-420-PKG

Part Number: RS1-42L

### Features:

- Load capacity up to 25lbs (11kg)
- Overall height 42" (106.7cm)
- 3" (7.6cm) locking casters
- 5" (12.7cm) slide-in mounting plate or VESA 75/100 plate
- Custom color options (grey is standard)
- MRI safe options are available
- Sturdy 25" base

Patient Monitors	LCD Monitors
• Masimo	• Toshiba
• Spacelabs	• Sony
• GE	• Samsung
• Nihon Kohden	• Gateway
• Mindray	• Advantech
• Welch Allyn	• DELL
• Philips	• NEC
• Nonin	• LG

**Other Manufacturers Options Available**

**Please specify model when ordering.**

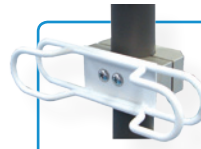
# Roll Stand **Accessories**



## Tablet / Laptop **Mount**

- Adjusts to fit most tablet/laptop PCs
- Tilt adjustment for easy viewing

Part Number: TABMNT-R125



## Cord **Wrap**

- Conveniently wrap cords and keep them organized

Part Number: CORDWRAP-R125



## Soft Grip **Handle**

- Easy grab handle

Part Number: RS1-HANDLE



## Power **Bar**

- Hospital grade, 4 power outlets
- 120 VAC, 60Hz

Part Number: POWER4-R125



## Power **Holder**

- Holds most power adapters for PCs, patient monitors and LCDs

Part Number: PWRHLD-R125



## Wire **Basket**

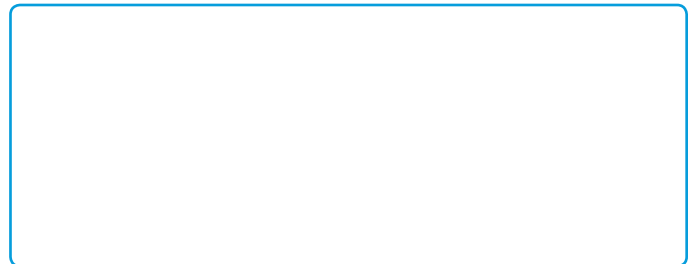
- 10"W x 6"D x 9" H white wire basket
- Convenient storage

Part Number: 100609-R125-BB

Please visit [www.amico.com](http://www.amico.com) for more information on our complete line of mobile solutions.



## Distributed By:



SP-RS091 PRINTED JULY 09

the right **connection**

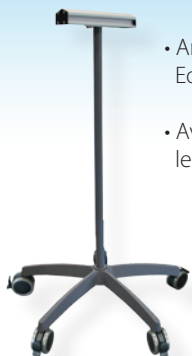
## Equipment Roll Stand



### Features:

- Load capacity up to 25 lbs (11kg)
- Overall height 42" (106.7cm)
- 3" (7.6cm) locking casters
- 1 or 2 foot horizontal rail options available
- Custom color options available (grey is standard)
- MRI safe option available
- Sturdy 25" base
- Variety of accessories available

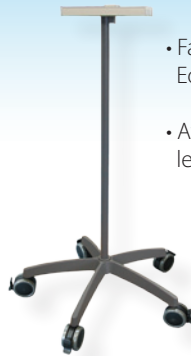
### ARS Equipment Roll Stand



- Amico Horizontal Equipment Rail
- Available in 1 or 2 foot lengths

Part Number: ARS-RS042-012

### FRS Equipment Roll Stand



- Fairfield compatible Equipment Rail
- Available in 1 or 2 foot lengths

Part Number: FRS-RS042-012

### Equipment Roll Stand



- Using a pole clamp, this roll stand can be completely customized for your needs

Part Number: RS1-42

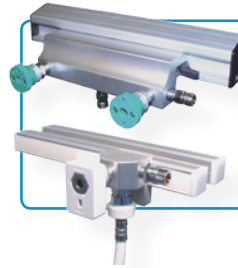
# Roll Stand **Accessories**



## Hose **Assemblies**

- Used to connect a medical gas block to a source
- Custom made to order

Call for part numbers.



## Gas **Blocks**

- Snap-on outlets 1, 2 or 3
- Available for all gases
- All outlet fittings available

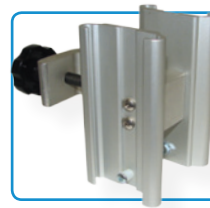
Amico and Fairfield gas block options shown



## Canisters & Canister **Holders**

- Disposable and reusable canisters available
- Ring bracket and canister sold separately
- 1200cc, 2000cc, and 3000cc size available

Call for part numbers.



## Vacuum **Slides**

- Conveniently mount your canister suction ring bracket

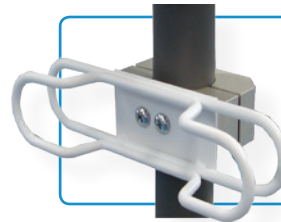
Part Number: SLIDE2-P (includes two slides)



## Blender **Bracket**

- Used for mounting oxygen/air blenders

Part Number: BLBRKT-R125



## Cord **Wrap**

- Ideal for wrapping wires, hoses and tubing

Part Number: CORDWRAP-R125



## Wire **Basket**

- 10"W x 6"D x 9"H white wire basket
- Convenient storage

Part Number: 100609-R125-BB



## Humidifier **Bracket**

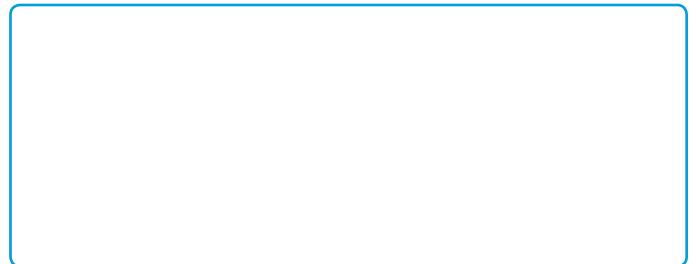
- Used for mounting heated humidifiers

Part Number: HUMBRKT-R125

Please visit [www.amico.com](http://www.amico.com) for more information on our complete line of mobile solutions.



## Distributed By:



SP-RSQ091 PRINTED JULY 09

the right **connection**