



PENDANT SYSTEMS



Cath Lab | Endo | OR | ER | Trauma | ICU | Patient Lift



SPECTRA SERIES

- 100% customizable; ready for future upgrading
- Choice of single or dual mounts and single or dual arms
- Service Console has 340° rotation



REVERSE ARM Ideal for low ceilings



SATURN SERIES

- Mounted directly to the ceiling
- Two styles available: 340° rotation or rigid
- 100% customizable



EQUIPMENT TRANSPORT SYSTEM (ETS)

- Easier to transport equipment in operative use by a patient throughout the hospital with minimal staff
- Can handle up to 8 IV pumps
- Customizable to fit your unique clinical needs
- Service Console has 340° rotation



PATIENT LIFT PENDANT

Check out our demo videos online:
www.amico.com/clinical_plp.htm

Equipment Planners, Architects and Contractors are saying:

- The single structure offers considerable savings in both planning and installation
- No more worries about trying to avoid countless obstacles in the ceiling
- The PLP gives a lot of flexibility to meet clinical demands
- They love that the Amico Pendant may be upgraded with the Integrated Patient Lift feature in the future

The Clinical Staff are saying:

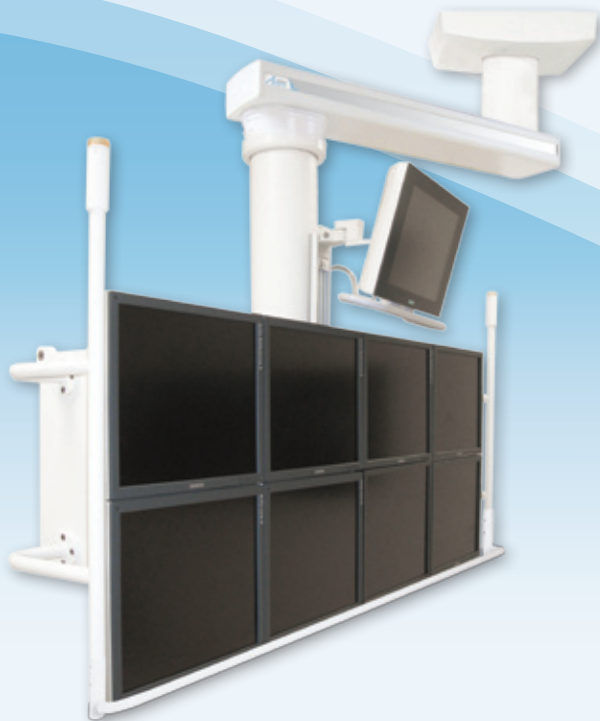
- It is extremely easy to transfer a patient from bed to chair or stretcher
- They never have to return the lift to a charging station as it stays constantly charged
- PLP is always within reach and is more likely to be used (no more "out of sight, out of mind")
- The flexibility in the system allows for effective transfers, patient positioning and turning

Patient Lift Pendant (PLP) Features:

- Direct power to the PLP ensures the lift will work all the time
- Streamline work flow and create a safer clinical environment
- Maintain the ability to have a fully functional console on either side of the patient
- Install with a single structural support



Patent Pending Patient Lift Pendant (PLP)



CATH LAB

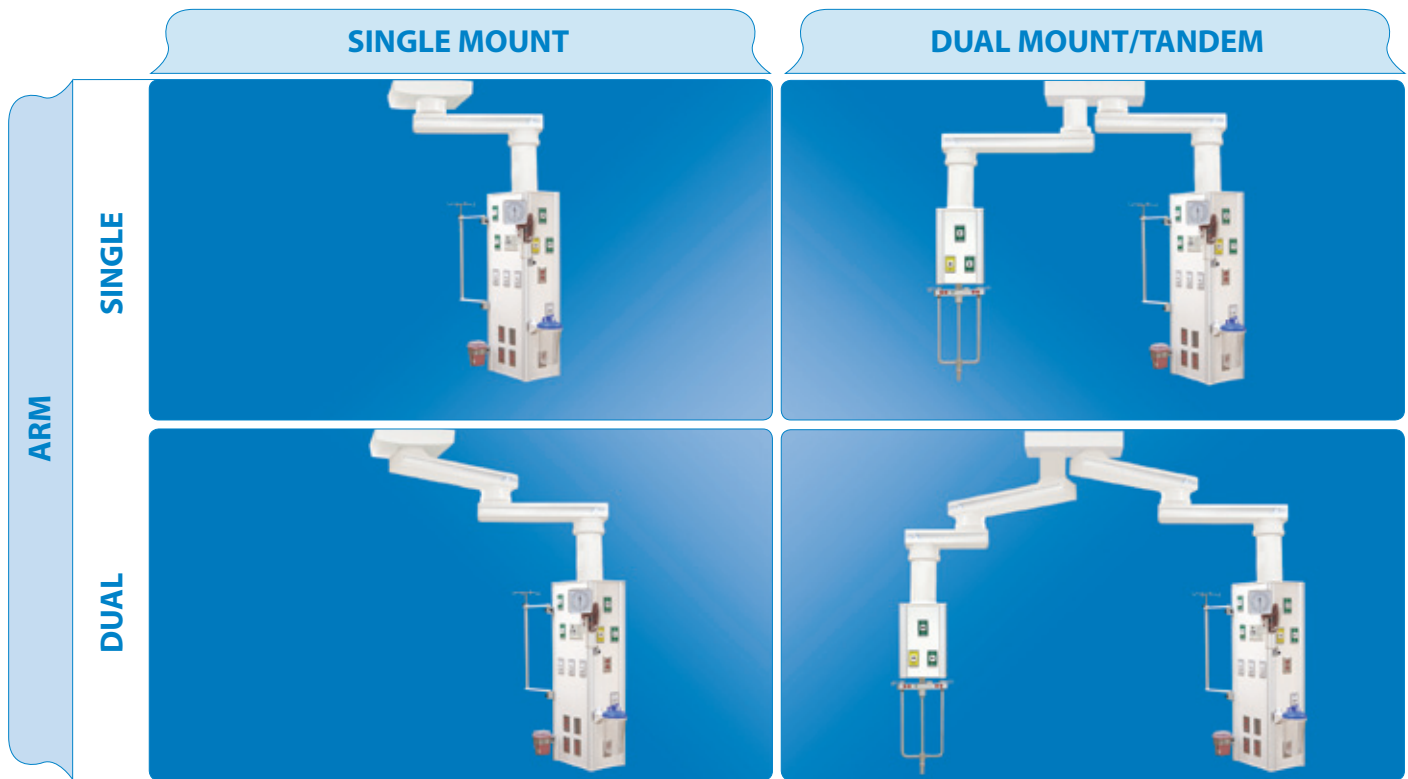
- Available in 3, 6 or 8 monitor service consoles
- Optional high or low profile ceiling covers
- Customizable options in single or dual mounts and single or dual arms

EASY TO USE BRAKES



ENDOSCOPY

- Pendant systems tailored to suit your clinical needs



SERVICE CONSOLE SIZES



SUMMARY OF TECHNICAL DATA

LENGTH OF ARMS	27"-47" (69-119cm) each arm
WEIGHT CAPACITY OF ARM	Up to 1,146lbs (520kg)
INTERNAL CAPACITY OF ARM	12 hoses, 6 circuits, 8 data jacks
LENGTH OF SERVICE CONSOLES	20"-60" (51-152cm)
ROTATION OF SERVICE CONSOLE	340 degrees
FINISH	Powder-coated finish
OUTLET TYPES AVAILABLE	DISS, Ohmeda, Puritan Bennett, Chemetron, Oxequip
MOUNTABLE ACCESSORIES	Full accessories catalog available
BRAKING SYSTEM	Mechanical Friction & Pneumatic are standard
BEARING SYSTEM	Rolling Needle Bearings are standard
BEARING THROAT SIZE	4.72" (120mm) in diameter

UNIVERSAL ANCHOR PLATE	Supplied by Amico
CEILING STRUCTURE	Supplied by Customer
CEILING HEIGHT ACCOMMODATIONS	Minimum 8' 0" (244 cm)
OPTIONAL EQUIPMENT	Integrated Patient Lift, Equipment Transport System
INSTALLATION	2-4 hours per arm
CERTIFICATIONS	UL/CSA, ETL, OSHPD
PRODUCT WARRANTY	5 years; 2 years for PLP
APPLICATIONS	Cath Lab, Endo, OR, ER, Trauma, ICU, Patient Lift, Anesthesia, Diagnostic Imaging
PRODUCT ORIGIN	All products (including parts & components) are North American manufactured